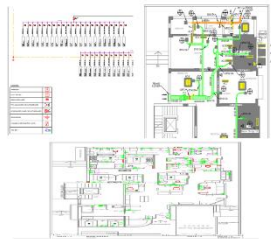


# MEP SOLUTION FOR Interior Fitout / Trunking Projects

Concept Drawing



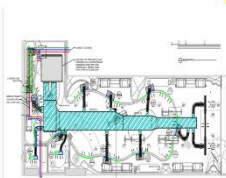
Detail Drawing



BOQ & Make List

Section No.	Section Name	Qty	Unit
1	Tray & Conduit		
Provide and fix in position the following MSB type PVC-U conduit embedded in wall / ceiling followed with suitable touch-up on the embedded section including all accessories like bands, conduit boxes and valves, outlet boxes with cover plates of approved make. Contractor shall make working drawings & bills according to actual requirements at site and approval of the Client.			
1.1	75 mm PVC-U conduit	100	Mtr
1.2	50 mm PVC-U conduit	50	Mtr
2	Floor Raceway	10	Mtr
B. LIGHTING FITTURES			
Installation of lighting fixtures with design as per the details. Before installing the fixtures, the contractor shall ensure that the ceiling is properly leveled and the fixtures are properly aligned. The contractor shall also ensure that the fixtures are properly secured and the wiring is properly concealed.			
2.1	General Down light	80	No.
2.2	Decorative Pendant Light	10	No.

Construction Drawing



## Index

- About us
- Services we do
- Execution Process
- D & D Core Team
- Project Reference
- Contact US

# About us

We have separate Electrical and Mechanical design to provide MEP Solution for Interior Fit out projects. Fit out projects are different aspect with accurate space design which need more attention of interior design concept and portfolio.

Our Fitout MEP Team closely working with interior Architects to understand basic space designs and requirements to fulfill MEP Solutions for each project.

We are continuously delivering our good quality of design drawings with co-ordination of interior items in details.

Using our design and BIM construction outsourcing services, our clients have numerous advantages i.e. including time and cost savings during the design & construction stages of projects.



**6+**  
Years' Experience

**300+**  
Completed Projects

**150+**  
Customer world wide

## Fitout Spaces Are Include

- Retail
- Office
- Healthcare
- Education
- Restaurant & Café (F & B)
- Apartment

## Interior Fitout – MEP Services

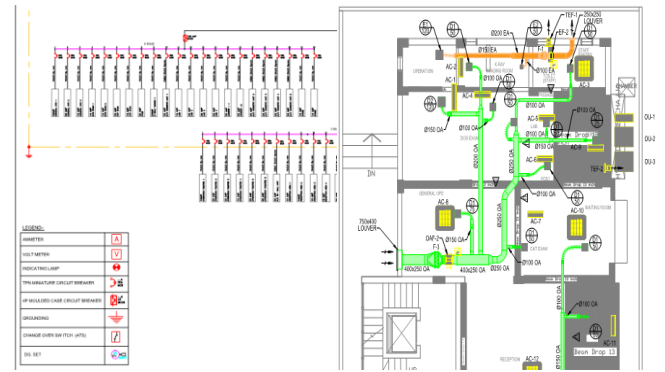
- **Concept Drawing**
- **Detail Drawing**
- **Construction Drawing**
- **BOQ & Make list**
- **As Built**

## Concept Drawing



At this stage our MEP designer starts the works with basic consideration of design for calculation of heat loads to start with following MEP items to place.

- HVAC Equipment
- Basic location of electrical DB panel & Lighting and power fixtures, Telephones, Data /CCTV System,
- Location of fire sprinkler.
- Fire alarm, panel, fixture fire smoke detector, Strobe / Speaker.
- Fire sprinklers as per standard designs.



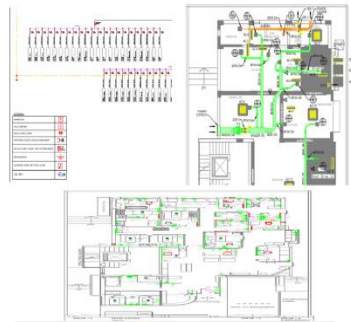
## BOQ & Make List

Junction Box ( Ceiling )	Nos	7
<b>B Tray &amp; Conduit</b>		
Providing and fixing in position the following MMS type FRLS conduits embedded in wall / ceiling followed with suitable touch-up on the embedding works including all accessories i.e. bends, junction boxes, pull wires, outlet boxes with cover plates of approved make Contractor shall make working drawings & qty. according to actual requirements at site and approval/consent of the Client accordingly.		
25 mm PVC conduit	Mtrs	625
50 mm PVC conduit	Mtrs	60
<b>4.1 Floor Raceway</b>		
	Mtrs	20
<b>5 LIGHTING FIXTURES</b>		
<b>A Installation of lighting fixtures with lamps as per the details below including necessary hardware such as clamos,nuts, bolts, nails, screws and suspension rods as required for fixing the fixtures in position as directed by architect .</b>		
<b>5.1.1 General Down Light</b>		
	Nos	86
Decorative Pendant light	Nos	12
Decorative Ceiling light	Nos	4

After the final go ahead of detail, our engineering team use to start working on quantity take off and prepare bill of quantity with one make as list.

Junction Box ( Ceiling )	Nos	7
<b>B Tray &amp; Conduit</b>		
Providing and fixing in position the following MMS type FRLS conduits embedded in wall / ceiling followed with suitable touch-up on the embedding works including all accessories i.e. bends, junction boxes, pull wires, outlet boxes with cover plates of approved make Contractor shall make working drawings & qty. according to actual requirements at site and approval/consent of the Client accordingly.		
25 mm PVC conduit	Mtrs	625
50 mm PVC conduit	Mtrs	60
<b>4.1 Floor Raceway</b>		
	Mtrs	20
<b>5 LIGHTING FIXTURES</b>		
<b>A Installation of lighting fixtures with lamps as per the details below including necessary hardware such as clamos,nuts, bolts, nails, screws and suspension rods as required for fixing the fixtures in position as directed by architect .</b>		
<b>5.1.1 General Down Light</b>		
	Nos	86
Decorative Pendant light	Nos	12
Decorative Ceiling light	Nos	4

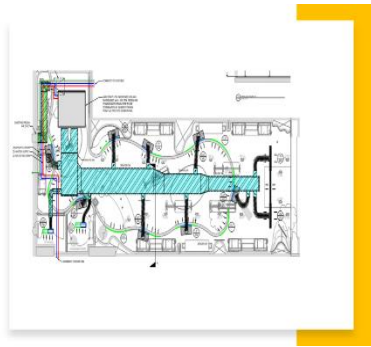
## Detail Drawing



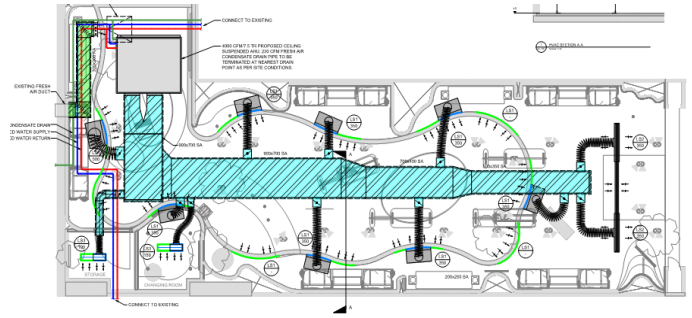
Once's we receive the approval on the concept design we detailed the networks piping and the circuiting as follows Following we are MEP detailed use to covered:

- Ducting and piping route
- Electrical detailed Loads, Schematic with Circuits
- Sprinkler Cover space with pipe size.
- Fire alarm systems smoke detectors, strobe and speaker.
- Basic elevation design for MEP systems.

## Construction Drawing



After the final go ahead of detail design, we produce the construction stage drawing with proper dimension and section. To make ready of site execution.

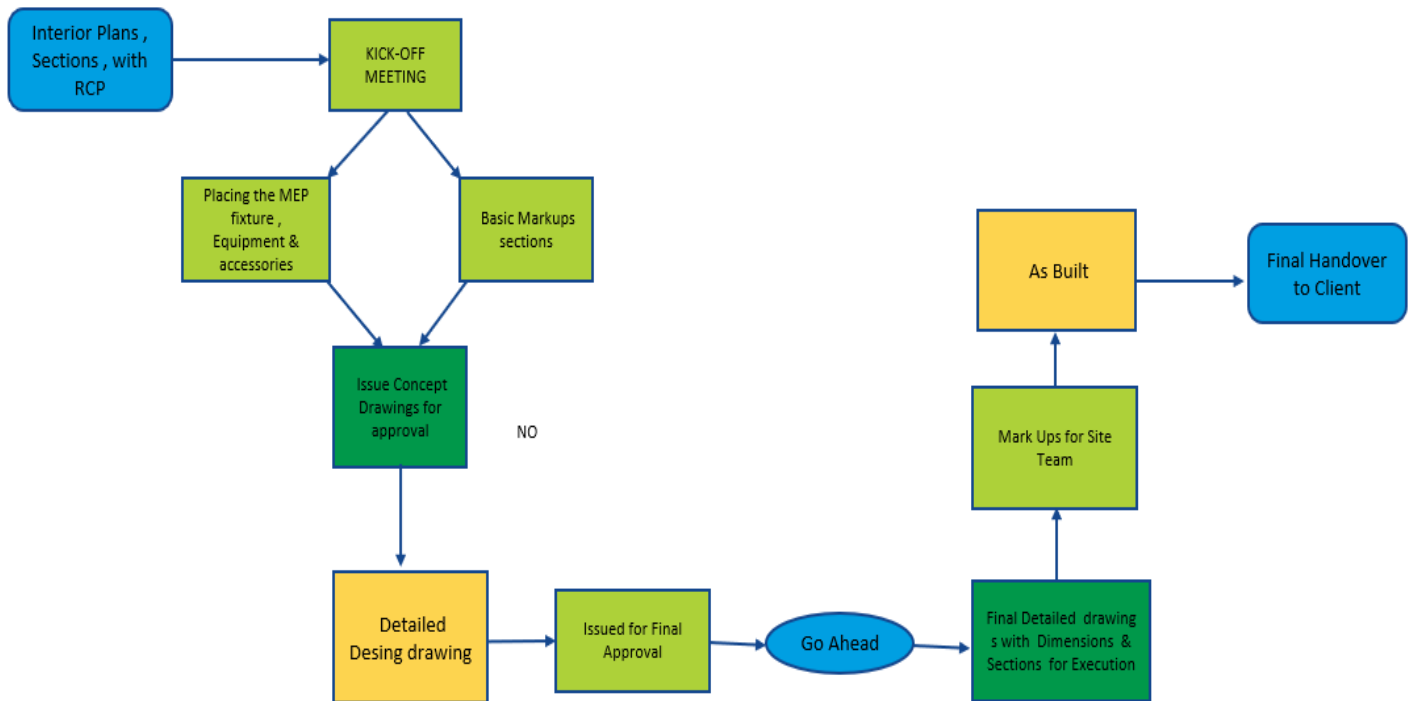


## As Built Drawing

After completion of construction, site team used to mark-ups changes made in site based on the actual execution.

Based on the mark-ups, we produced the as built model drawing inline with client requirement for final handover

## Project Execution Process



# Core Team

## **Irshad Ali Shaikh** **(Principal MEP)**

Irshad Ali Shaikh is Principal MEP and He had works with each role of MEP construction industry in India and other part of the world and accumulates the extensive 17 years of experience in MEP engineering services industries. He has done higher qualification of Prost Graduation in Project Management from NICMAR and Engineering from Pune University. In his past career, he had engaged more than hundred different building projects throughout India special in Mumbai region. He has started his journey as a Entrepreneur since early 2018 & In his small journey, he has successfully delivered the more than 300+ design, BIM & CAD projects globally with the best quality and unique team effort.

In his career, he had worked as MEP project Lead with prestigious client like Lodha, Oberoi, Reliance, SBUT, Raheja, & reputed Architect like Sanjay Puri, Hafeez Contractors, Hiten Sethi, Qutubmandiwala. He has experienced in all kind of projects i.e. starting from Residential complex, Commercial, Malls, High rise building, Hotel, Hospital & Institutional building projects including infrastructure projects like airport, Stations, metros. He has trained our engineering team to provide high value engineering solution that best fits them for their specific project.

## **Rakesh Shelke** **(Engineering Co-Ordinator)**

He is having more than 7 years of experience in building construction Industry. He is having experience in all type of projects planning and designing for MEP systems. In his career, he had worked in site and gained his knowledge for closely co-ordination with architect, management consultants, strategy, procurement and execution team for project construction. Based on his site experience, he is handy on the co-ordination role to attending the meeting, practical site related issues and attending MEP design co-ordination with our internal team in the process of execution.

He is qualified civil engineer and has good knowledge of building project execution process in terms of design and construction. He has experienced in all kinds of projects i.e., starting from Residential township, Commercial IT buildings and parks, Malls, High rise building, Hotel, Hospital. Currently coordinating with our existing clients & monitoring the complete delivery of design and document of MEP engineering and BIM works.




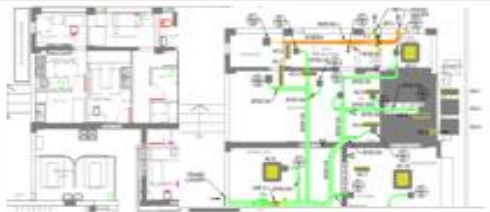
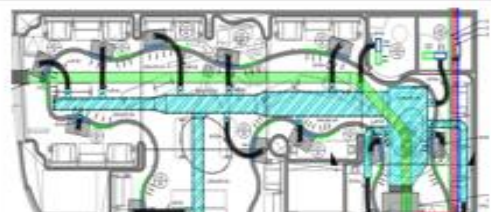
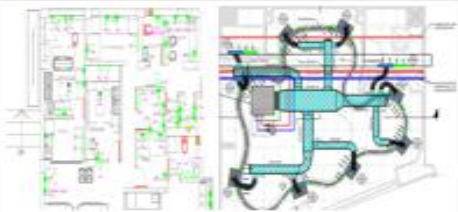
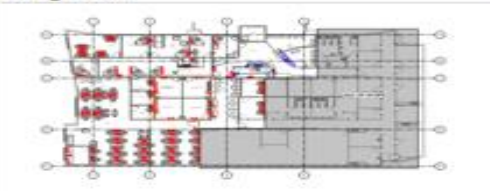

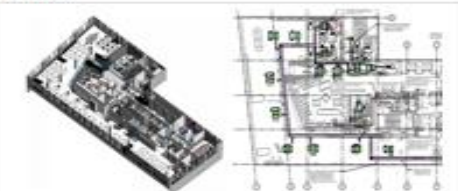
## **Rupam Mondal** **(MEP Manager – BIM / CAD)**

He is a qualified mechanical engineer and having more than 9 years' experience in Building construction Industry for MEP design, detailing and drawing production through BIM & CAD. He is having expertise Autodesk CAD & BIM tools like AutoCAD, Revit, Fabrication, AutoCAD MEP, Navis works and has complete knowledge of drafting services for all stages (Pre/post) of construction process. He is working in DESIGNING AND DRAWING SOLUTION since from starting period of the company.

With a short period of time, He has gained the managing the drawing production process of the company, client communication in the project execution and assisting with innovative (R & D) solution of new process, tools for new requirement of clients. He is experienced in all kind of projects i.e. starting from Residential complex, Commercial, Malls, High rise building, Hotel, Hospital & Institutional building projects including infrastructure projects like airport, metro in US, Australia, New Zealand and India.



# Project References

MEP Solution -Interior Fitout Sample					
					
One Plus Store Mumbai	ED-A-MAMMA Noida	D-MART , DOMBIVLI Thane			
					
Supertails Bangalore	ED-A-MAMMA Bangalore	ED-A-MAMMA Pune			
					
Community Mental Health Australia	Merrylands UK	Accenture Fit Out New Zealand			

## Contact US

 <b>DESIGN AND DRAWING SOLUTION</b> ONE STOP BIM   CAD   MEP ENGINEERING SOLUTIONS
<b>Mumbai Office</b> 108, 1st Floor Plot No. X2/1, MIDC PH-II Dombivli East, Central Mumbai – 421203, Thane, MH, India
<b>Kolkatta office:-</b> 56, S.N. BANERJEE ROAD, SARKARBAGAN BARRACKPORE. KOL-120, West Bengal , India
<b>Channel Partner-USA</b> barkarblue Inc 363 N Amphlett Blvd, San Mateo, CA 94401, United States

