

# INTERIOR SOLUTION

## (Rendering & Design)

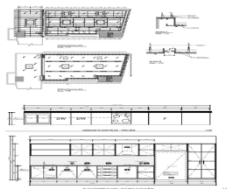
### Concept Plans (Plan and Render Image)



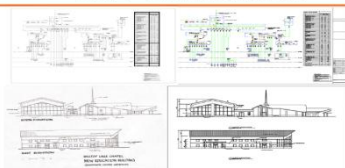
### Detail Design Drawing



### Construction Drawing & BOQ



### CAD Conversion



## Index

- **About us**
- **Services we do**
- **Execution Process**
- **D & D Core Team**
- **Project Reference**
- **Contact US**

# About us

Design and Drawing Solution offers construction documents for Interior design and construction.

We are familiar with the interior fit out design & construction process for all type of buildings like single family housing, residential apartments, commercial offices, hotels, hospitals.

Our team having a good knowledge of finishes detail with all type of painting, lighting, furniture and civil detail like flooring tiles & false ceiling.

We are providing our services worldwide and specially with Australia, New Zealand with other part of the world with interior contractors, interior consultant & architect.

Using our BIM and 2D CAD outsourcing services, our clients have numerous advantages i.e. including time and cost savings which are realized during the design phase and more importantly, during the installation and build stages of construction projects. We are certified Autodesk users and started in Mumbai, India from early 2018 and having our representative in US as well as channel Partner.



**6+**  
Years' Experience

**300+**  
Completed Projects

**150+**  
Customer world wide

## Interior Spaces Are Include

- Retail
- Office
- Healthcare
- Education
- Restaurant & Café (F & B)
- Apartment

## Interior Solution

- Concept Plans  
(Space plan & Render)
- Detail Design Drawing
- Construction Drawing
- BOQ

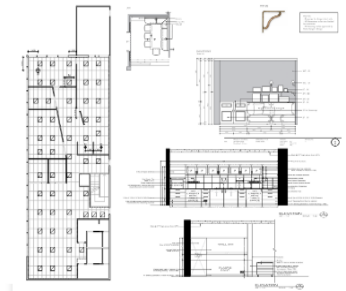
## Special Services

- CAD conversion

## Concept Plans (Plan and Render Image)



## Detail Design Drawing



### Concept Plan

In this stage, We at D & D, produce the zone and space plans based on the survey, available input spaces and space applications inline with standard reference drawings, markups of designers to prepare a basic presentation plan for client approval.

### Render Image

Based on the basic zones and plans, our rendering team use to develop the 3D model in sketch up / 3D max to produce the renders for actual visualizations of interior fixture.

### Input Files

Interior Architects use to share us basic markups, reference plans to produce the concept plan and render image.



### Detail Design Drawing

After approval on the concept plan, We at D & D, produce the detail drawings for Interior to do the detailing of wall paneling, ceiling detailing, partitions, flooring and preparing the detail plans as follows reference drawings , markups of designers to prepare a basic presentation plan for client approval.

Floor Existing

Floor plan proposed

RCP

Electrical & Data

Elevations

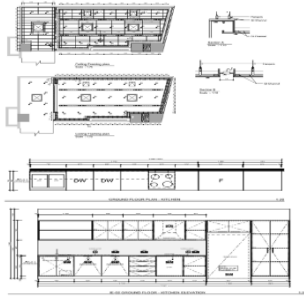
Schedules

### Input Files

Approved concept plan and render image to produce the detail design drawings.



## Construction Drawing & BOQ



### Construction Drawing

After detail drawing has been produce, basic layer of co-ordination with electrical & HVAC ceiling wall elements to take final approval from client. After final call on the detail drawing, we provide dimensions with required annotation and section, elevations to complete the construction set for execution. Detail Drawing Package Includes

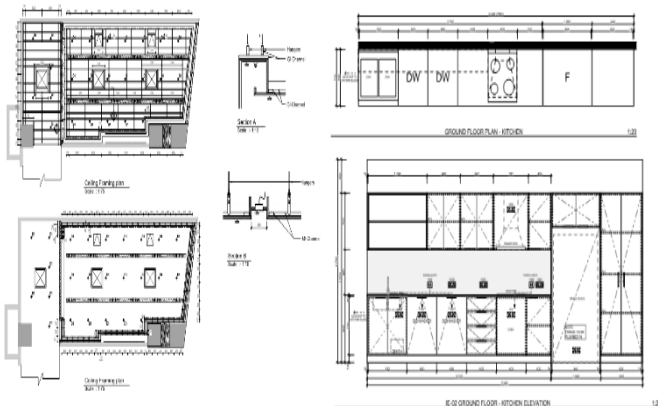
- Floor Existing
- Floor plan proposed
- RCP
- Electrical & Data
- Elevations
- Partition wall / Glazing detail
- Schedule
- Furniture detail

### Input Files

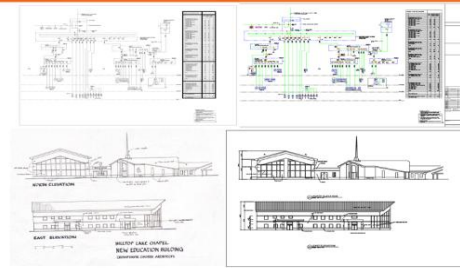
Based on the detail design drawing and MEP design for co-ordinations to produce final construction drawing.

### BOQ

Based on the and construction drawing, we use to generate BOQ (Bill of quantities) for each interior items in schedule.



## CAD Conversion

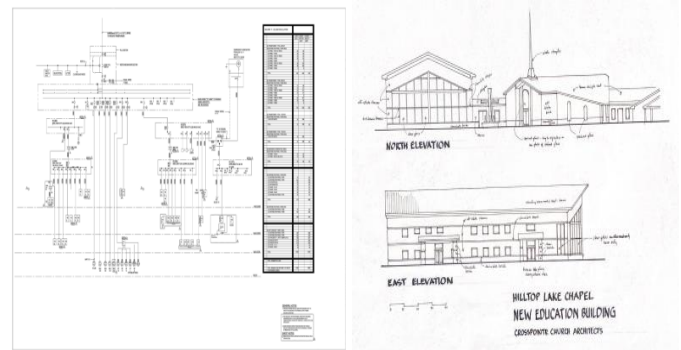


CAD Conversion refers to the process of converting analog information into a digital format. In other words, it involves the conversion of physical objects, documents, or data into a digital representation that can be stored, processed, and accessed electronically.

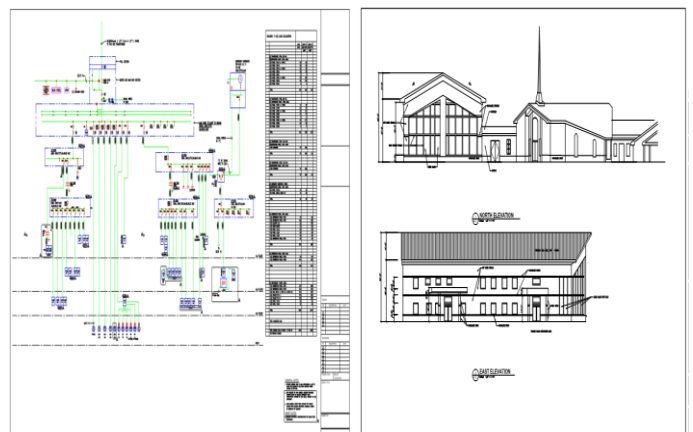
### Input

We use receive the files as SCAN document or PDF version to work on the conversion process to covert the files in CAD.

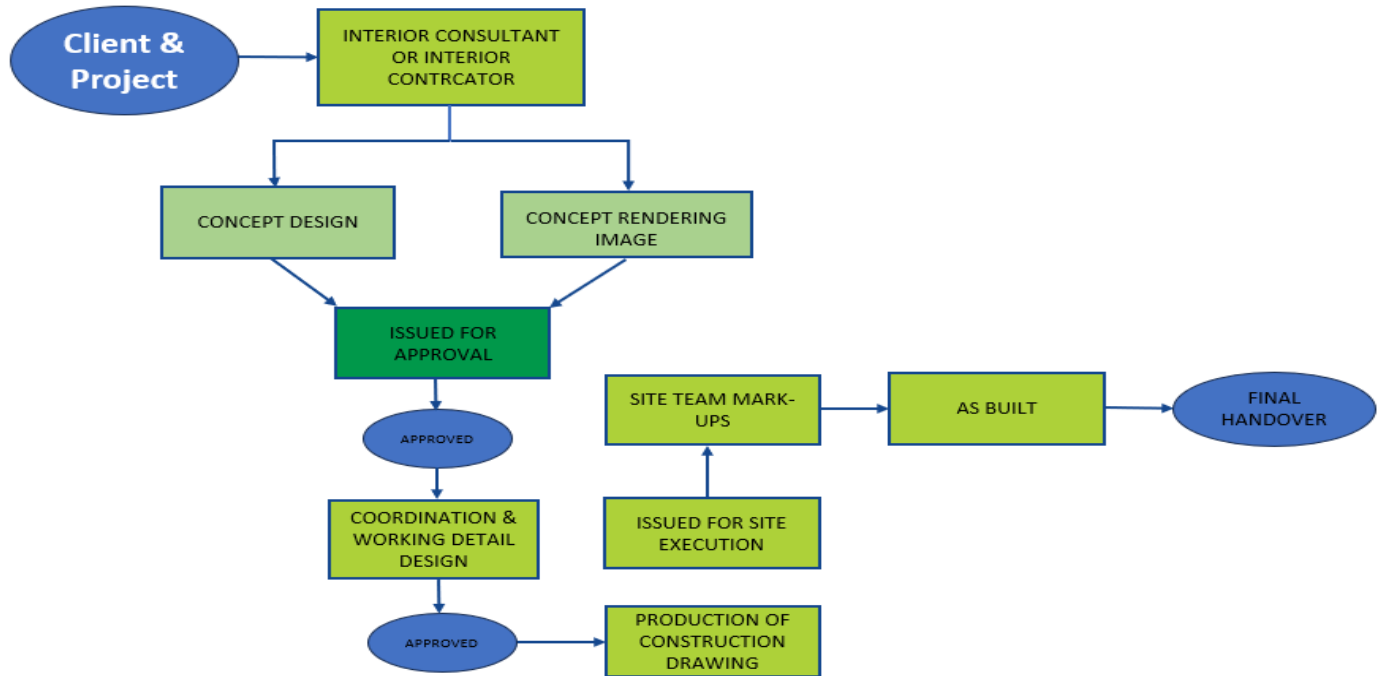
### Input



### Output



# Execution Process



## QC Checklist

Common Checklist	
Title Block	
1	Key Plan
2	Revision Check
3	Date
4	Scale
5	Title
6	Consulting Details
7	Client Details
8	Sheet Key Notes
B General Notes and Sheet Key Notes	
1	General Notes
2	Sheet Key Notes
C Aesthetic Review / Grid Review	
1	Drawing Presentation
2	Grid Check
D Project Specific	
1	Sheets Referenced in Appendix A Present
2	Schedules Present
3	Finishes Present
4	Elevations to Finish Schedules Proper
5	Missing Key Drawing-Specific Information
6	Proper Drawing Reference Details
7	Relevant Annotation Information

INTERIOR – 3D MODEL	
1	INTERIORWALL
2	WALL PANELLING
3	CEILING DESIGN, LIGHTING
4	FURNITURE

INTERIOR - DRAWING	
1	Finishes, Ceiling and Wall designs
2	Furniture and Fixtures, Lighting Design
3	Standard Annotations
4	Required Sections & Elevations
5	Schedule Detailed Sheet
6	Legends & Notes

# Core Team

## **Irshad Ali Shaikh** **CEO – Co-Founder**

Mr. Irshad Ali is the co-owner & founder of DESIGN AND DRAWING SOLUTION. He is having more than 15 years of experience in Building services in construction Industry throughout AEC project execution process from Pre-construction, construction processes like MEP engineering consulting, Designing, installation and handover process of the project.

He has completed BE in Mechanical Engineering from Pune University with Post Graduation in Project Management (PGPPM) from NICMAR Pune, India. In his small journey, he has successfully delivered the more than hundred BIM/CAD project for his satisfied client with the best quality and unique team effort. He has experienced in all kinds of projects i.e., starting from Residential township, Commercial IT buildings and parks, Malls, High rise building, Hotel, Hospital & Institutional building. Including building Infrastructure projects like metro, airports, globally i.e. USA, Australia, New Zealand & India.

## **Karishma Bibi** **Sales Head**

She is the co-owner of DESIGN AND DRAWING SOLUTION and well experienced in offshore sales development initiatives. She is having a good knowledge of result-oriented sales development processes and customer retention. She is leading the complete sales team for B2B sales within the company and managing and monitoring the effectiveness of the entire sales cycle. She has implemented her interior design expertise to improve the technical expertise for client communication for offshore sales which helps her build a long-term relationship with new and existing clientele.

## **Rupam Mondal** **Production Manager**

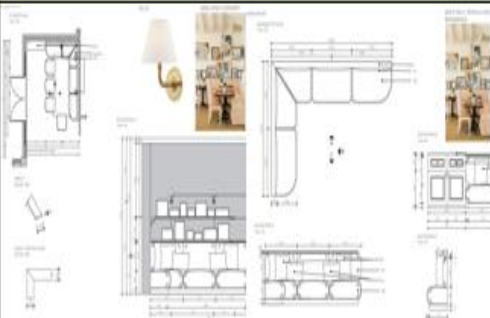
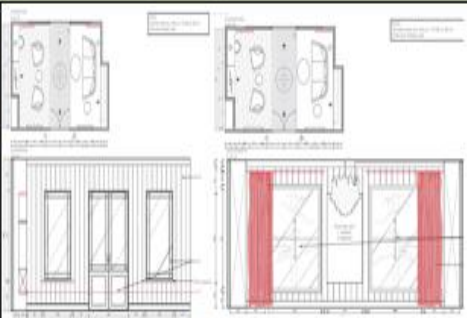


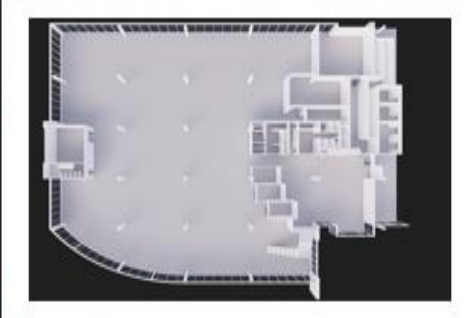

He holds a Mechanical Engineering diploma from WBSCTE, India and having more than 7 years' experience in Building construction Industry for MEP engineering, Drafting, of 3D, 4D, 5D & 6D BIM service.

He is having expertise in MEP engineering calculation, with all Autodesk BIM/CAD tools like Revit, Fabrication, AutoCAD MEP, Navis works and AutoCAD and has complete knowledge of engineering and drafting services for all stages (Pre/post) of construction process .


He is working in DESIGNING AND DRAWING SOLUTION since from starting period of the company.

With a short period of time, He has gained the managing process of the company, client communication, project management process and assisting with innovative (R & D) solution of new process, tools for new requirement of clients.

# Project References

Interior Solution - Construction Document		
		
KSD Cronin Dining Room Drawing Package	5 Nelson St, Sandringham Renovation	SUPERTAILS
Australia	Australia	Mumbai ,India
Apartment	Apartment	Medical Facility
		
One Plus India Kandivali-ESC Customer Service Store	1 Julius Avenue	Hursville Donor Centre
Mumbai , India	Australia	Australia
Retail Store	Commercial	All Type

## Contact US

 <b>DESIGN AND DRAWING SOLUTION</b> ONE STOP BIM   CAD   MEP ENGINEERING SOLUTIONS
<b>Mumbai Office</b> 108, 1st Floor Plot No X2/1, MIDC PH-II Dombivli East, Central Mumbai – 421203, Thane, MH, India
<b>Kolkatta office:-</b> 56, S.N. BANERJEE ROAD, SARKARBAGAN BARRACKPORE. KOL-120, West Bengal , India
<b>Channel Partner-USA</b> barkarblue Inc 363 N Amphlett Blvd, San Mateo, CA 94401, United States

